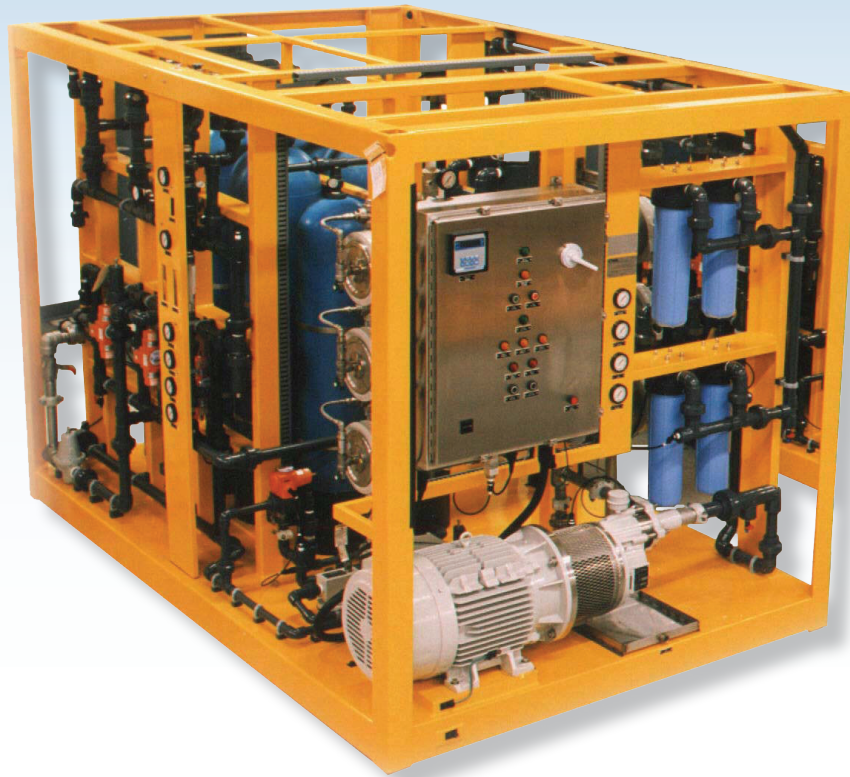


# ITT C'TREAT OFFSHORE WATEMARKERS



C'treat builds a complete range of Reverse Osmosis (RO) watermakers to meet the wide variety of demands of the offshore drilling and production industry. Each packaged system is designed and built for simple operation and ease of maintenance. Many special system components have been developed and optimized for use in the offshore environment.



ITT

C'treat

## INNOVATIONS



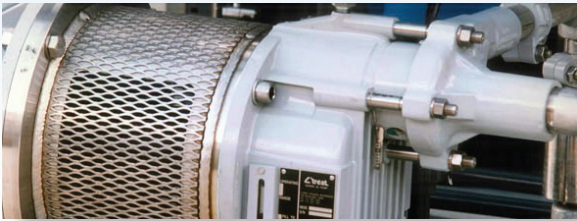
### MEDIA FILTERS

The media filters remove all influent chlorine and particles down to a nominal 25 microns. The filters, requiring no separate backwash source, are completely automated and run in both service and backwash modes while the desalting system is producing fresh water.



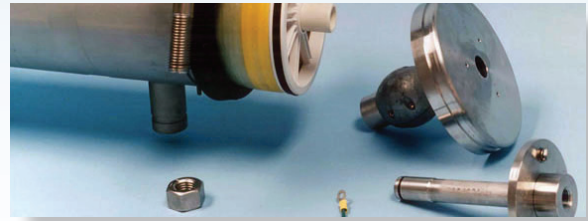
### GRADED MECHANICAL FILTERS

The useful life of reverse osmosis membranes is maximized by optimal and economic filtration. Through extensive experience and field testing we know to filter seawater down to 1/2 micron to ensure essentially particle-free water to the membranes downstream.



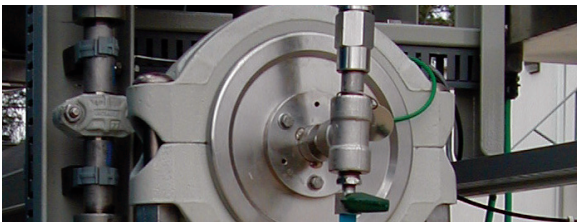
### SERIES 20 PUMP

The Series 20 pump has been continuously improved for over 30 years and it is the workhorse of nearly all our global installations. It is a compact, single-stage centrifugal pump. All its moving parts (which are small enough to fit in a briefcase) can be rapidly serviced or replaced in the field in under 30 minutes.



### TYPE 200-SW PERMEATORS

Our cathodically-protected, 316L stainless steel permeator housings feature side entry/exit high-pressure ports and a single, spiral-wound membrane cartridge can be quickly accessed through the Victaulic® coupling retained end caps.



### AUTOMATIC PRODUCT FLOW REGULATION

The hydraulics of the watermaker are self-regulating, with no valves to adjust. They maintain a constant membrane flux to ensure maximum membrane life and a constant, reliable fresh water stream without operator intervention.



### STEEL-CAGE FRAME CONSTRUCTION

Light, but rugged, steel cage construction and integral lifting eyes encloses the watermaker components to protect them from a variety of dangers; from shipment, installation, and other equipment on board, such as cranes, fork lifts and dollies.

## PARTS AND CONSUMABLES



C'treat and its worldwide licensees maintain a complete inventory of spare parts and consumable products for distribution to all points where systems are in service. A ready supply of items needed to assure reliable, continuous operation is available for immediate shipment. These parts and consumables meet the same quality and performance standards as materials used in start-up and commissioning.



## FIELD SERVICES

C'treat offers preventive maintenance for each system it builds and puts into service. Service personnel are factory trained to handle problem analysis and correction in the field. Field service is offered for C'treat systems and equipment built by other manufacturers.

## DESIGN & ENGINEERING SERVICES

Let C'treat put its decades of offshore water treatment experience to work for you in the project design phase. Whether it's water quality and quantity specification, basic engineering information, or budgeting equipment costs and operating economics, we can help your staff expedite the design of water treatment systems optimized to meet your specific needs.